

Q3./ For the views shown below in figure (3), draw the isometric shape.

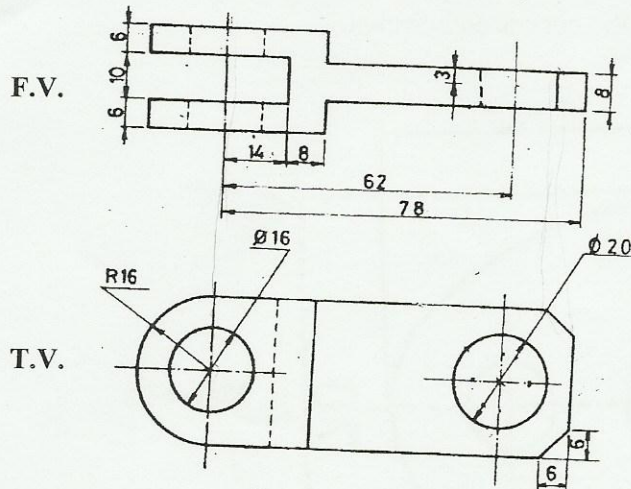


Figure (3)

Q4/ For the following plan in figure (4):

- 1- Thickness of external walls are 36.0cm (foundation width 1.00m).
- 2- Thickness of internal walls are 24.0cm (foundation width 0.80m).
- 3- Depth of excavation is 1.20m.
- 4- Thickness of slab is 20.0cm.

Draw:

- 1- Section A-A from foundation to the end of the slab (scale (1:25)).

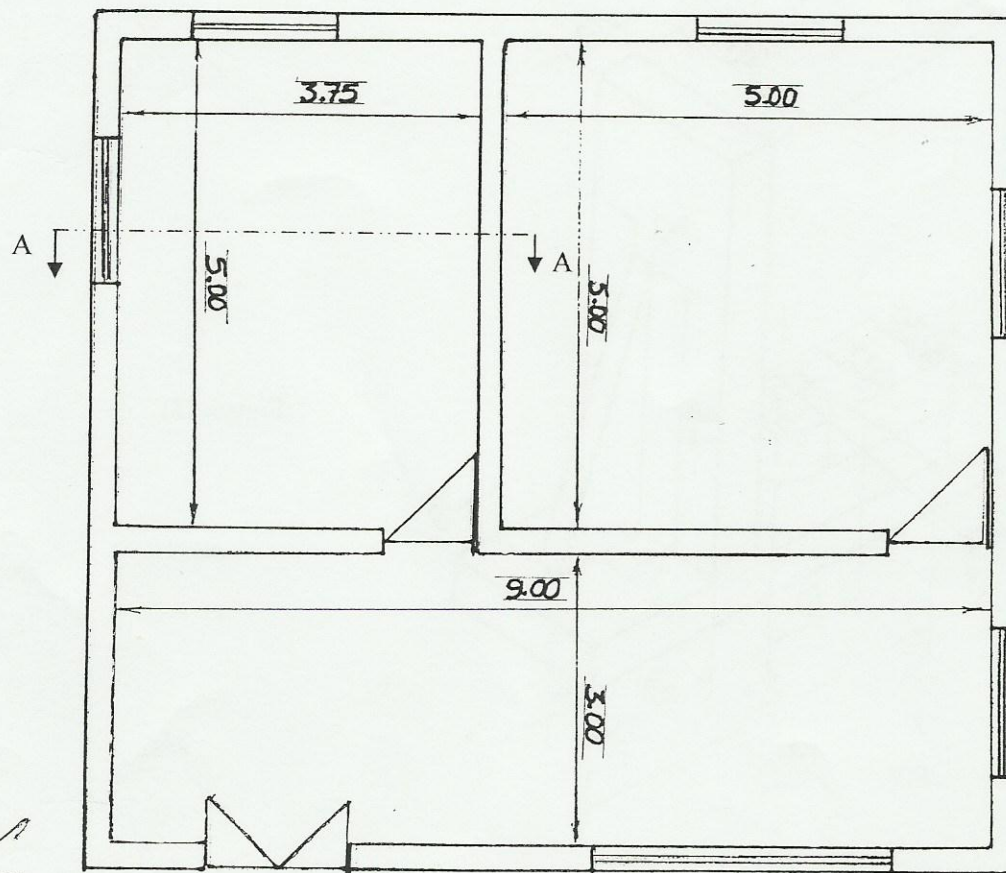


Figure (4)

Q1./ Draw figure (1) locating the centers of the curves and circles.

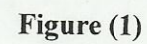
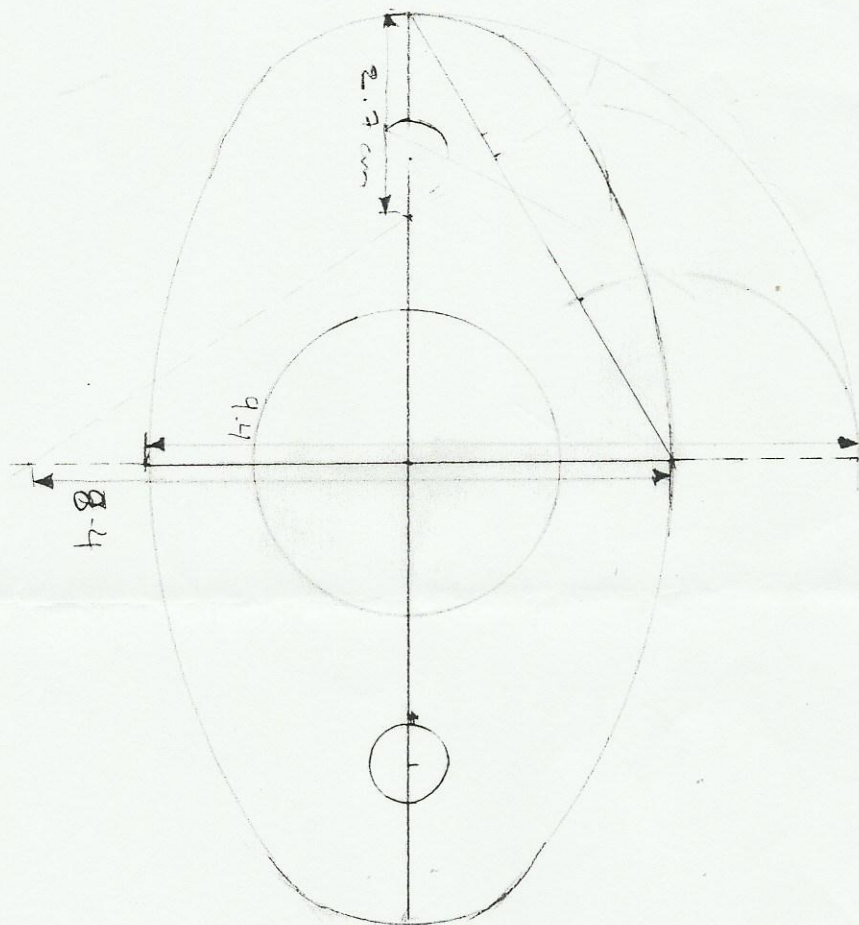
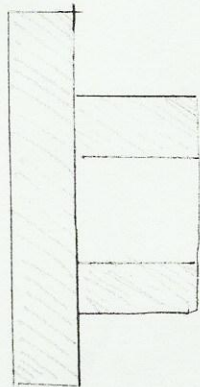
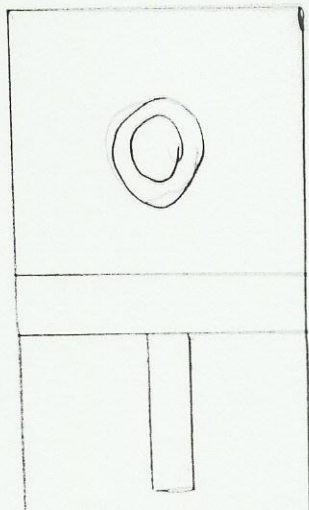
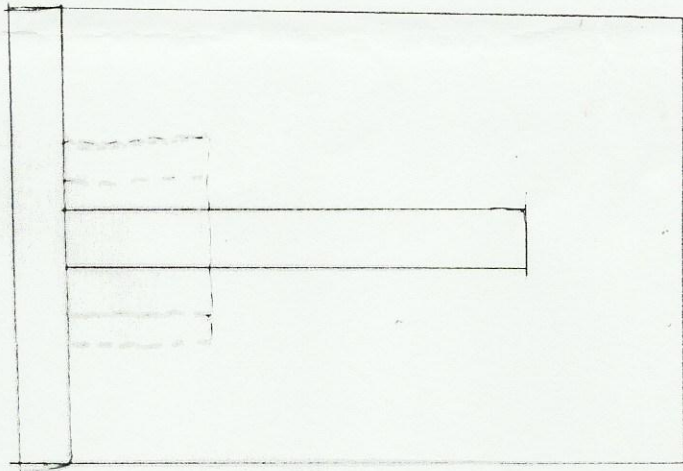
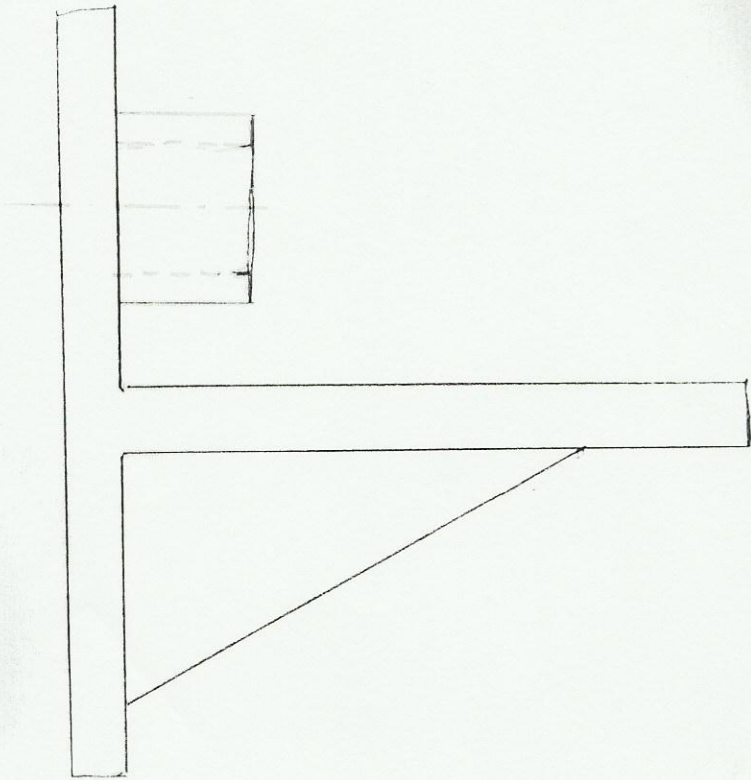
[illegible]

Figure (2)





Q4

